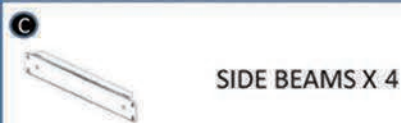



ASSEMBLY INSTRUCTIONS




HELP LINE
01977 555007




i **Information**
if in doubt contact the supplier


 Please read these instructions thoroughly before commencing assembly.


 Inspect all packages for damage and check that all components have been supplied


 Assembly should be undertaken by at least two people


 **Caution**
During Assembly

 Wear appropriate clothing -protective gloves and footwear are recommended


 Dispose of packaging materials responsibly


 Make sure the floor is level


 Allow adequate working space and be aware of others working around you


 Take care when handling heavy items particularly when lifting or stretching

 **Warning**
Rules for safe use of shelving

 Not suitable for use in damp or wet environments.

 ENSURE THAT THE MAXIMUM LOAD CARRYING CAPACITIES ARE NOT EXCEEDED

 Shelves must be loaded evenly, and load heavier items on the bottom shelves

 Never climb or stand on the shelves.

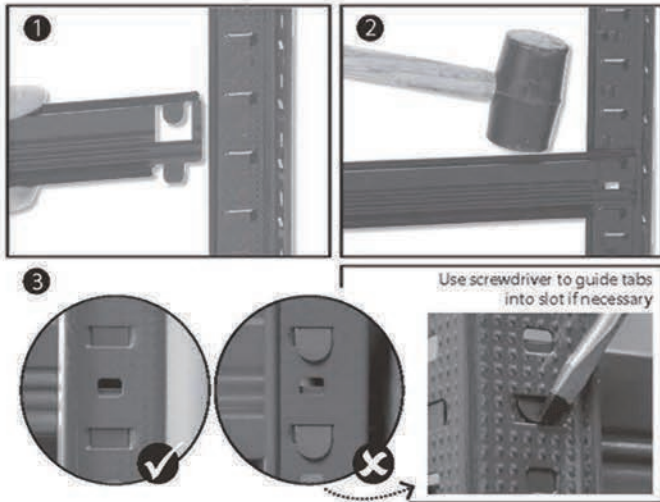
TOOLS REQUIRED



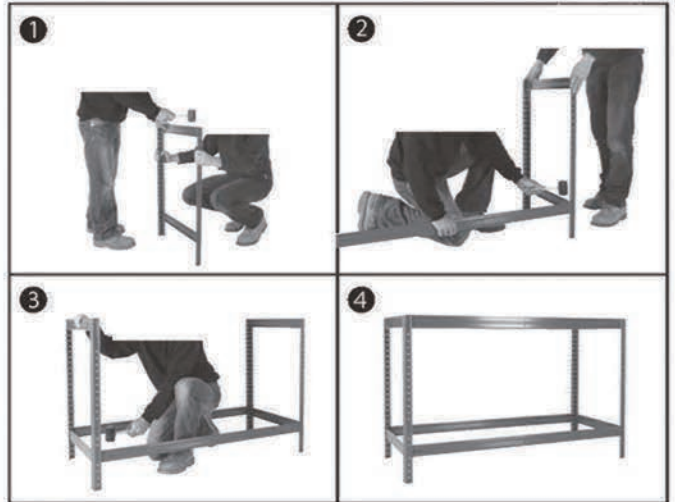
RUBBER Mallet

Assembly Instructions

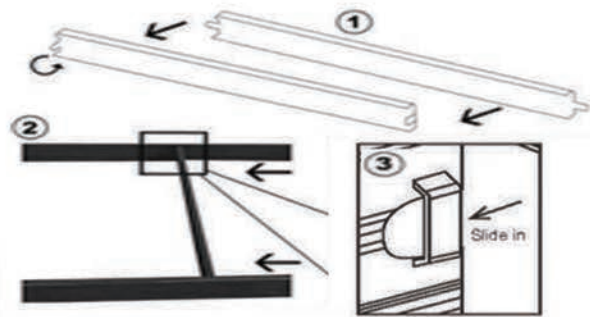
1. Slot first short beam into post. Tap into place with rubber mallet



2. Assemble end frames with short beams & join with long front & back beams



3. Slot into long beams.



4. Insert MDF board decks onto steel frame



5. Push plastic protective feet onto each post

