

ASSEMBLY INSTRUCTIONS



HELP LINE
01977 555007



Information

if in doubt contact the supplier



Please read these instructions thoroughly before commencing assembly.



Inspect all packages for damage and check that all components have been supplied



Assembly should be undertaken by at least two people



Caution

During Assembly



Wear appropriate clothing - protective gloves and footwear are recommended



Dispose of packaging materials responsibly



Make sure the floor is level



Allow adequate working space and be aware of others working around you



Take care when handling heavy items particularly when lifting or stretching



Warning

Rules for safe use of shelving



Not suitable for use in damp or wet environments.



ENSURE THAT THE MAXIMUM LOAD CARRYING CAPACITIES ARE NOT EXCEEDED



Shelves must be loaded evenly, and load heavier items on the bottom shelves



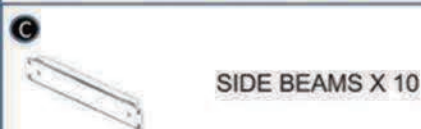
Never climb or stand on the shelves.



UPRIGHTS X 8



LONG BEAMS X 10



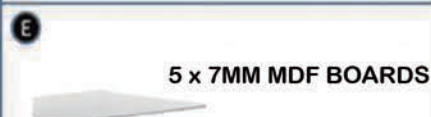
SIDE BEAMS X 10



PLASTIC FEET X 8



F. UPRIGHT CONNECTORS x 4



5 x 7MM MDF BOARDS

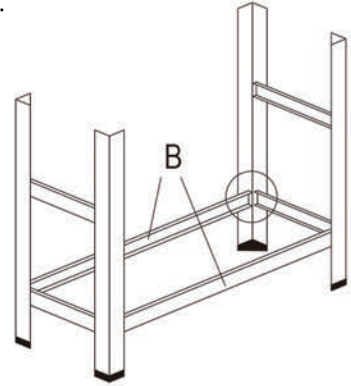
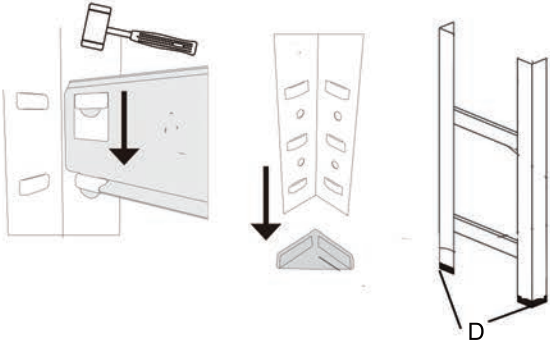
TOOLS REQUIRED



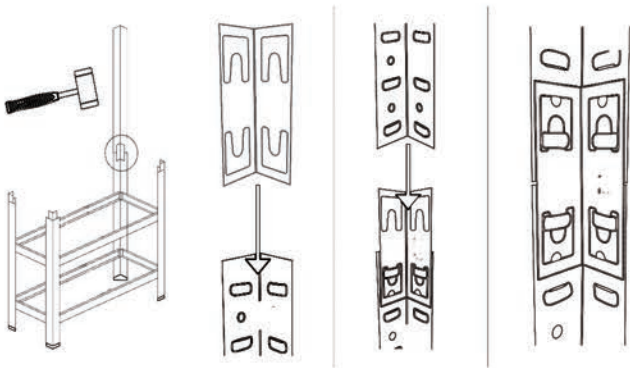
RUBBER Mallet

Industrial Shelving Bay Assembly

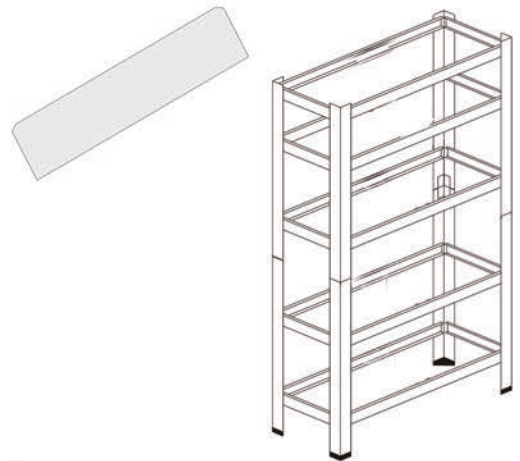
1. Slot first beam into upright. Tap into place with a rubber mallet at the desired level. Push plastic protective feet onto the bottom of the uprights.
2. Assemble end frames with short side beams and add long front and back beams to join the frames together.



3. Slot upright connector into top of lower upright. Push top into place or tap down with mallet if necessary.



4. Repeat steps 2-3 to add the remaining levels. Insert MDF boards at an angle, full corners first.



5. Push remaining plastic protective caps on the top of the uprights.

